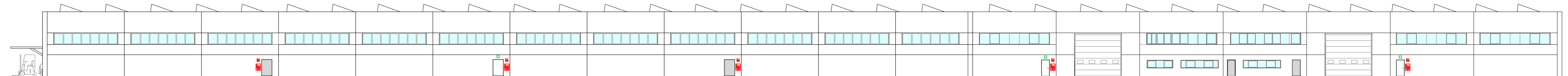
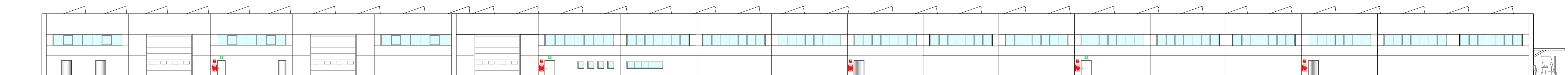


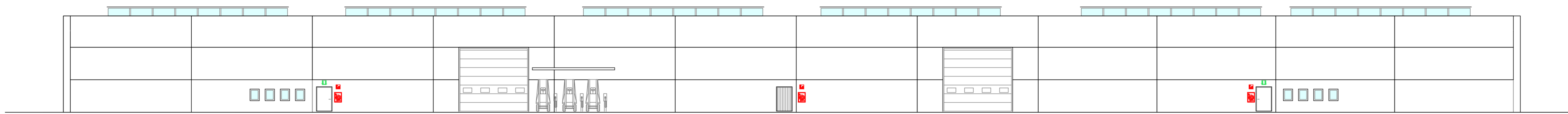
Studio Tecnico Fossa Consulenza Prevenzione Incendi via Ettore Petrolini, n° 14 - 42122 Reggio Emilia tel 0522/552639 e-mail info@studiofossa.net				
COMMITTENTE LAPI PLAST srl via 1° Maggio, 32 - loc.Barco Bibbiano				
PROCEDIMENTO Valutazione Progetto lavorazione materie plastiche				
UBICAZIONE via Barboiara, 12/b - loc.Barco Bibbiano				
Elaborato PROSPETTI SEZIONI PARTICOLARE STRATIGRAFIA FOTOVOLTAICO	Scala 1:200	Data 03/21	Pratica VVF nuova	Tavola 3



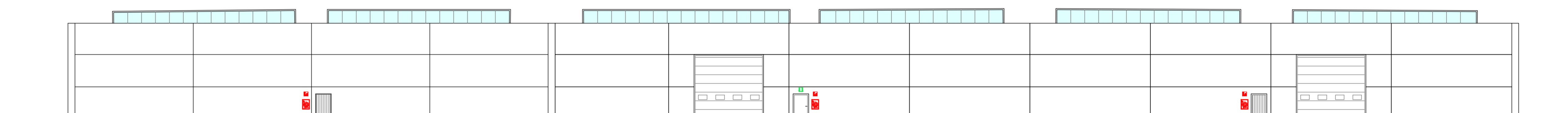
PROSPETTO NORD



PROSPETTO SUD

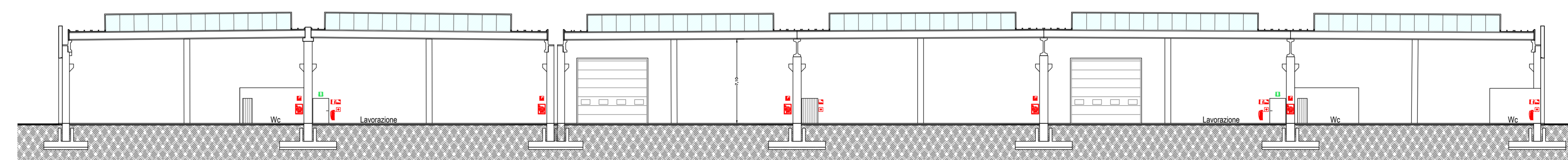
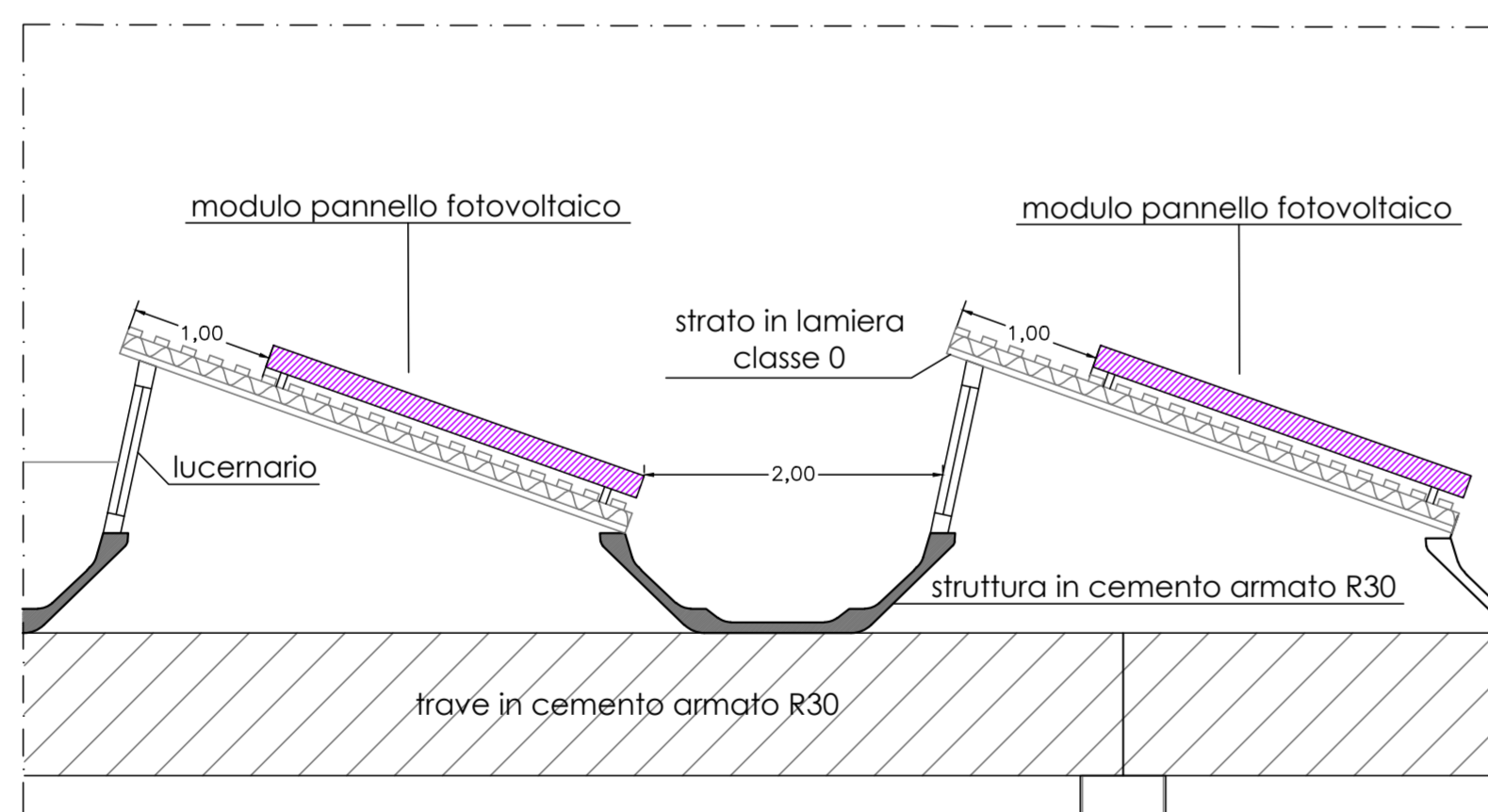


PROSPETTO EST

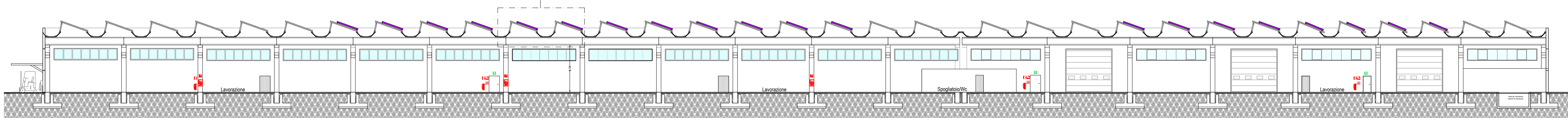


PROSPETTO OVEST

PARTICOLARE STRATIGRAFIA 1:50



SEZIONE BB



SEZIONE AA